



2.4GHz Slot Array Antenna for Wi-Fi MU-MIMO

Description

BHWR250 is a high-performance 2.4GHz antenna based on patented slot array antenna architecture, with the goal to maximize range and throughput of Wi-Fi especially products that support MU-MIMO. It features a 2-element, serial-feed topology that enables efficient radiation and gain/pattern optimization over 2.4-2.5GHz for Wi-Fi and other applications. BHWR250 features a well-defined, near-omnidirectional radiation pattern in the horizontal plane when placed vertically, while providing moderate gain enhancement suitable for MU-MIMO beamforming. It has a small-form factor of 12x57mm, compatible with common IPX/UFL cable assemblies, and delivers stable VSWR over housing and cabling effects.

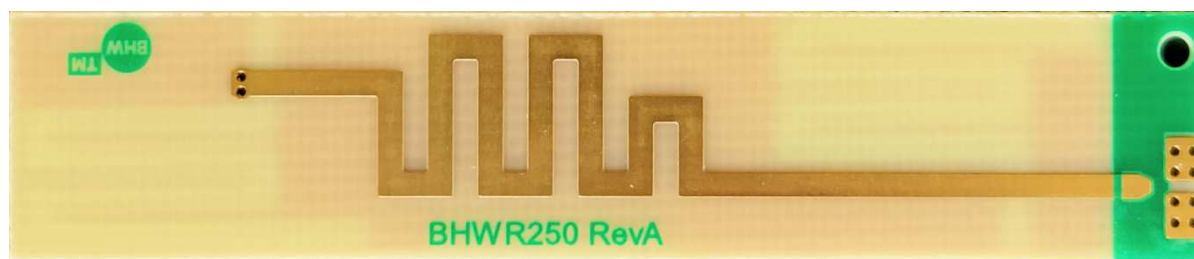
Key Features

- 2.4-2.5GHz Operation Frequency Range
- VSWR < 2:1 over 2.4-2.5GHz
- Near-Omni Patterns in Horizontal Plane
- Gain~3dBi, Optimized for MU-MIMO Beamforming
- High Efficiency: TBD
- Stable VSWR over Housing/Cabling Effects
- Au-Plated Finish for Maximal Efficiency

Key Applications

- Wi-Fi MU-MIMO Solutions
- Wi-Fi 3/4/5/6 Routers/Repeaters
- Wi-Fi Modules/Data Links
- 2.4GHz Audio/Video Streaming
- Long-Range BLE, ZigBee, IoT Solutions
- Generic 2.4GHz Radio Designs
- FPC Antenna Replacement with Minimum Frequency Shift

Product Information



12x57x0.6mm PCBA for IPX/UFL Cable Assembly



2.4GHz Slot Array Antenna for Wi-Fi MU-MIMO

For further information, please email to support@bhwtechnologies.com, or contact your local BHW Sales Rep or Distributor. We will send you the complete product datasheet as well as EVB related information.